

Cantilever Stairs

800-225-2539

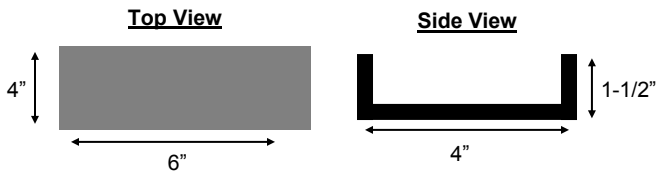
4000psi @ 28 days

www.psprecast.com

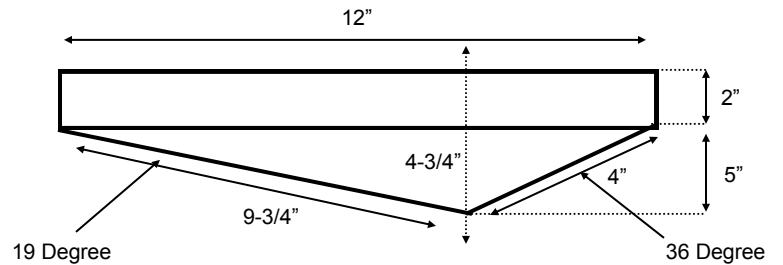
Stock sizes listed below in broomed & exposed aggregate finish.
Custom sizes, colors and finishes also available.

<u>Size</u>	<u>Weight</u>	<u>Reinforcement</u>
36" x 12" x 2-1/2"	95lbs.	#3 (3/8") rebar
40" x 12" x 2-1/2"	115lbs.	#4 (1/2") rebar
42" x 12" x 2-1/2"	125lbs.	#4 (1/2") rebar
44" x 12" x 2-1/2"	130lbs.	#4 (1/2") rebar
48" x 12" x 2-1/2"	140lbs.	#4 (1/2") rebar
Cross sections	—	#2 (1/4") rebar

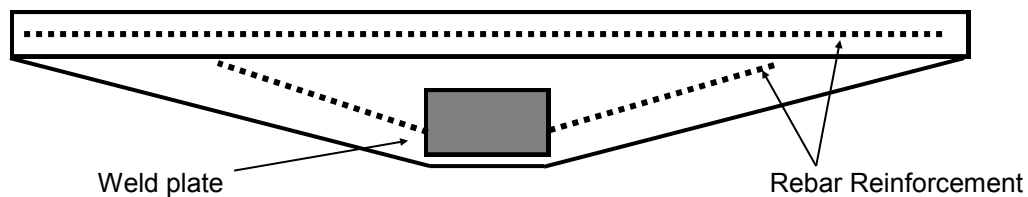
Weld Plate



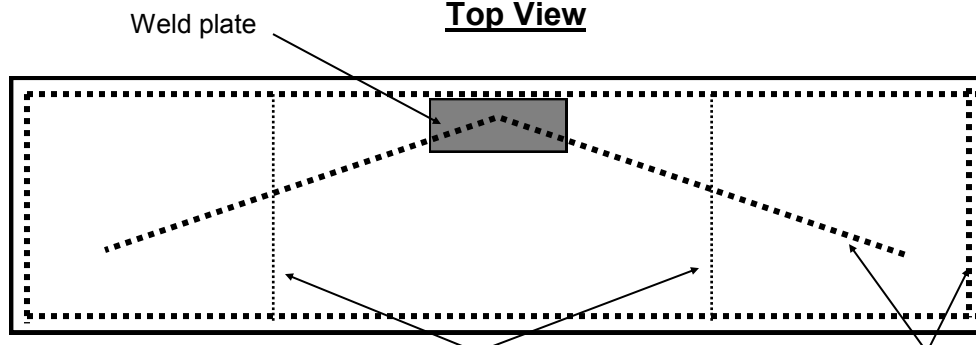
End View



Back View



Top View



2 pieces #2 rebar for center cross sections on stairs under 48". Placed between weld plate and end of stair.

#3 rebar for Stairs 36" and under.
#4 Rebar for stairs over 36". Rebar frame placed 1/2" in from edge.